

S.E. 1/4
SECTION 12, T.6N., R.2W., S.L.B.&M.

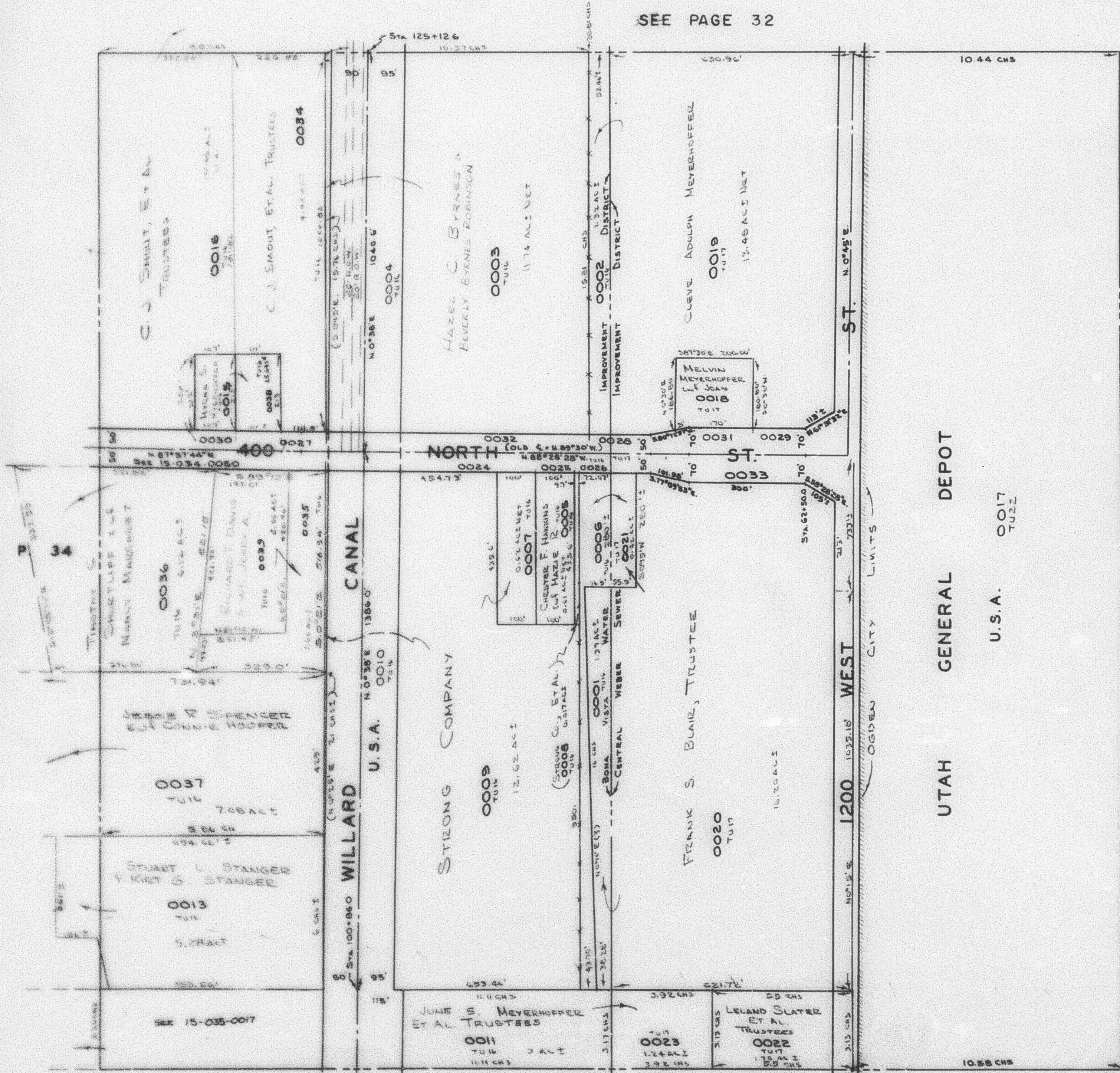
SLATERVILLE DISTRICT

TAXING UNIT: 16, 17, 22

SCALE 1" = 200'

PREFIX: 15-033

SEE PAGE 32



SEE BOOK
II
PAGE 23

UTAH GENERAL DEPOT

U.S.A. 0017
TU22

SEE P. 35